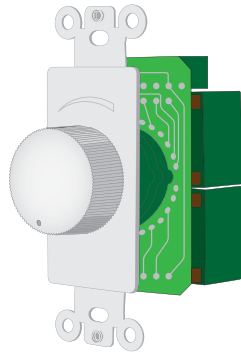




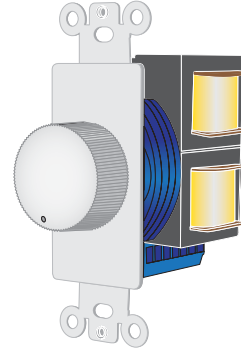
**Omage Volume controls** with auto-transformers and adjustable impedance for multi-room applications are designed to handle high-power loads and deliver clean sound. Detachable wire connection terminals facilitate and speed up installation. Decora wall plate included with all models.

### Step rotary volume controls



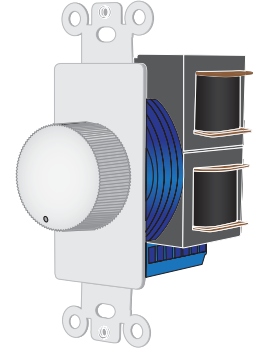
**VC2050**

**25 watt** rotary volume control



**AT150**

**50 watt** rotary volume control with impedance matching transformer



**AT200**

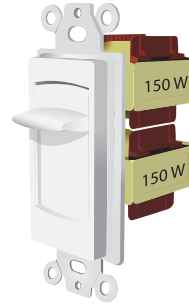
**70 watt** rotary volume control with impedance matching transformer

### Step slider volume controls



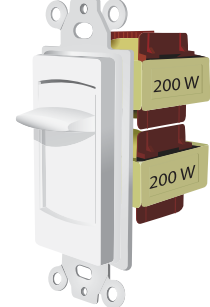
**IRSVC70-W**

**70 watt** slider volume control with built-in IR Receiver and impedance matching transformer



**ATS150**

**50 watt** slider volume control with impedance matching transformer



**ATS200**

**70 watt** slider volume control with impedance matching transformer



All volume controls come with a decora plate

No longer available

Model	Type	Power Handling RMS (watts)	Volume Attenuation	Terminal Gauge	Dimensions (H x W x D) (cm / inches)
VC2050	Rotary	25	9 step	22 to 14 AWG	10.5 x 4 x 5.5 / 4 x 1½ x 2
AT150	Rotary	50	12 step	22 to 14 AWG	10.5 x 4 x 5.5 / 4 x 1½ x 2
AT200	Rotary	70	12 step	22 to 14 AWG	10.5 x 4 x 5.5 / 4 x 1½ x 2
IRSVC70	Slider with IR	70	9 step	22 to 14 AWG	10.5 x 4 x 5.5 / 4 x 1½ x 2
ATS150	Slider	50	9 step	22 to 14 AWG	10.5 x 4 x 6.5 / 4 x 1½ x 2½
ATS200	Slider	70	9 step	22 to 14 AWG	10.5 x 4 x 5.5 / 4 x 1½ x 2